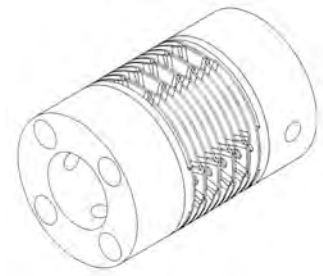
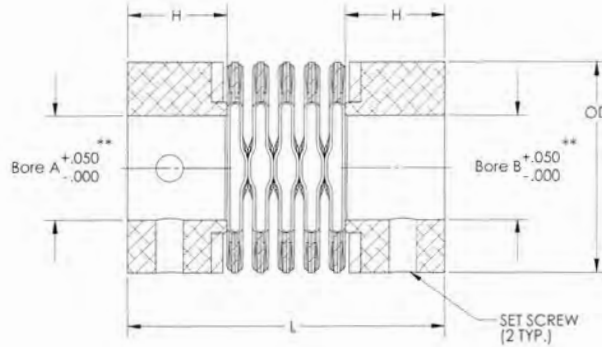
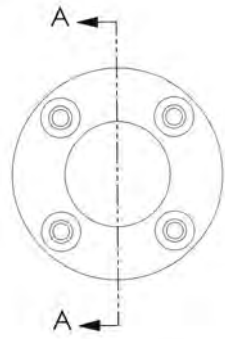


METRIC* C-FLEX LATTICE COUPLING

PATENTED DESIGN



MATERIALS: DISCS 420 SS
END FLANGE 416 SS
HUBS 6061 ALUM.

DIMENSIONAL SPECIFICATIONS								PERFORMANCE SPECIFICATIONS					
P/N	OD	L	MIN* BORE A/B	MAX* BORE A/B	H	SET SCREW SIZE	MAX TORQUE (N*m)	MAX RPM	MAX ANGULAR OFFSET (DEG)	MAX PARALLEL OFFSET	MAX AXIAL OFFSET	WEIGHT (g)	STATIC TORSIONAL STIFFNESS (N*m/DEG)
600750	19	35	4	10	12	M4 X 0.7	1.4	10,000	7	0.25	0.51	21	1.2
601000	25.4	38	8	13	12	M4 X 0.7	2.8	7,500	7	0.38	0.63	40	3.1
601250	31.7	42	14	16	12	M5 X 0.8	5.6	7,500	7	0.38	0.76	61	5.8
601500	38.1	57	17	19	18	M6 X 1.0	8.5	5,000	7	0.51	0.76	123	10
601750	44.5	66	20	23	19	M6 X 1.0	15.3	5,000	7	0.51	1	190	15
602000	50.8	72	24	26	21	M8 X 1.25	20.5	3,750	7	0.63	1.25	281	23
602500	63.5	79	27	32	20	M8 X 1.25	34	3,750	7	0.63	1.25	466	45

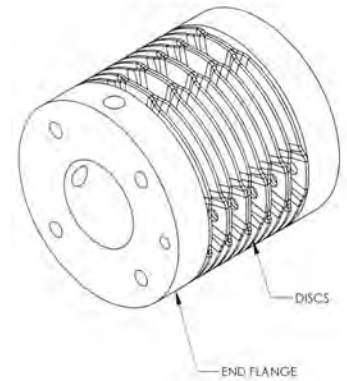
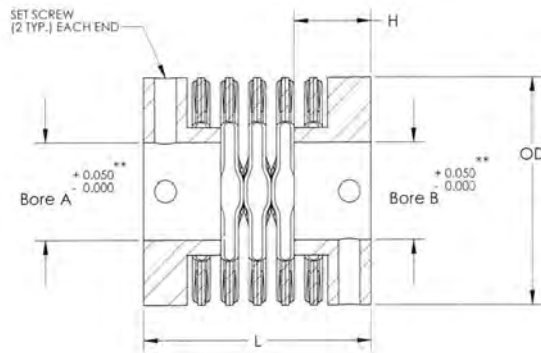
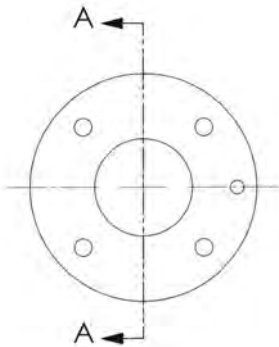
*ENGLISH SIZES AVAILABLE

**STD. TOLERANCE

ALSO AVAILABLE IN H7 TOLERANCE

METRIC* C-FLEX LATTICE SERVO COUPLING

PATENTED DESIGN



DIMENSIONAL SPECIFICATIONS								PERFORMANCE SPECIFICATIONS					
P/N	OD	L	MIN* BORE A/B	MAX* BORE A/B	H	SET SCREW SIZE	MAX TORQUE (N*m)	MAX RPM	MAX ANGULAR OFFSET (DEG)	MAX PARALLEL OFFSET	MAX AXIAL OFFSET	WEIGHT (g)	STATIC TORSIONAL STIFFNESS (N*m/DEG)
400750	19	19	4	10	6	M3 X 0.5	1.4	10,000	7	0.25	0.51	23.8	1.2
401000	25.4	25.4	8	13	8.7	M3 X 0.5	2.8	7,500	7	0.38	0.63	45.4	3.1
401250	31.7	31.7	14	16	13.6	M5 X 0.8	5.6	7,500	7	0.38	0.76	69.2	5.8
401500	38.1	38.1	17	19	12.8	M5 X 0.8	8.5	5,000	7	0.51	0.76	139.6	10
401750	44.5	44.5	20	23	14	M5 X 0.8	15.3	5,000	7	0.51	1	215.6	15
402000	50.8	50.8	24	26	14	M5 X 0.8	20.5	3,750	7	0.63	1.25	319	23
402500	63.5	63.5	27	32	15.6	M6 X 1.00	34	3,750	7	0.63	1.25	529	45

*ENGLISH SIZES AVAILABLE

**STD. TOLERANCE

ALSO AVAILABLE IN H7 TOLERANCE